

Camera
19,00 mq
R.I./R.V.>0,125

Bagno
5,4 mq

Disimp.
1,62 mq

Cantina
13,73 mq

Lavanderia
3,48 mq

Tinello
16,54 mq

Disimp.
3,80 mq

Ingresso
5,37 mq

Cucina
4,08 mq

Portico
38,83 mq

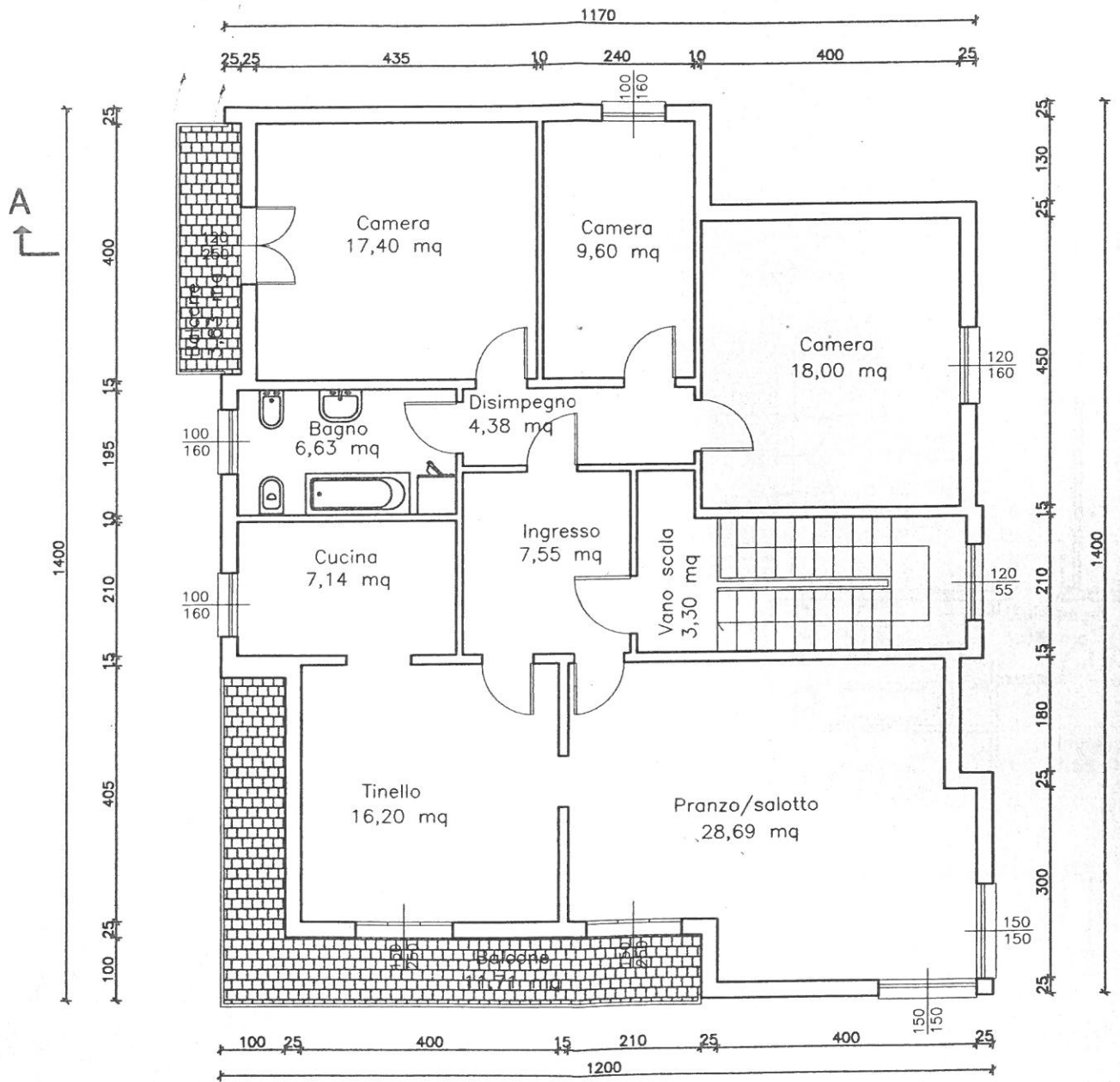
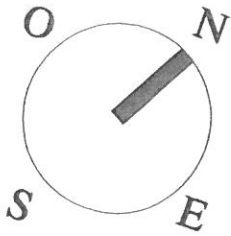
Camera
19,17 mq

Cancello pedonale

Via Mayora

2900

A



PIANO PRIMO